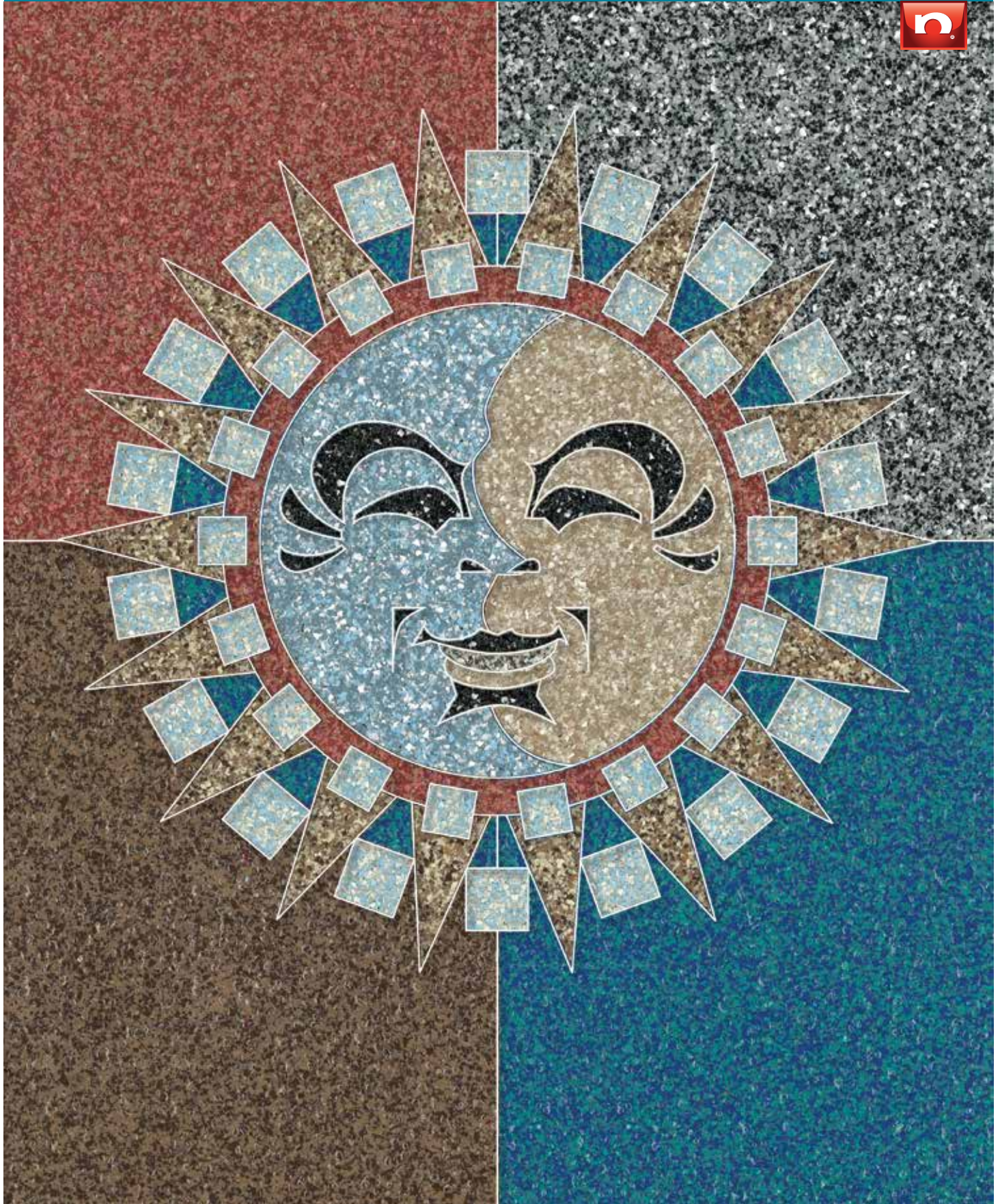
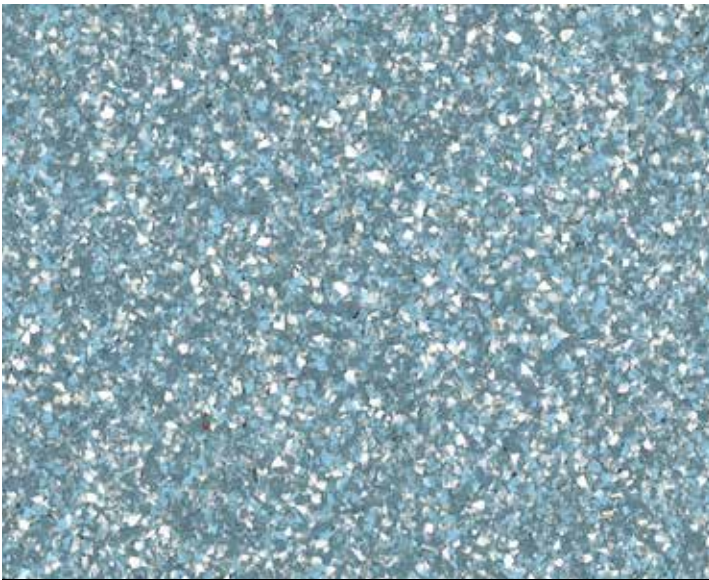
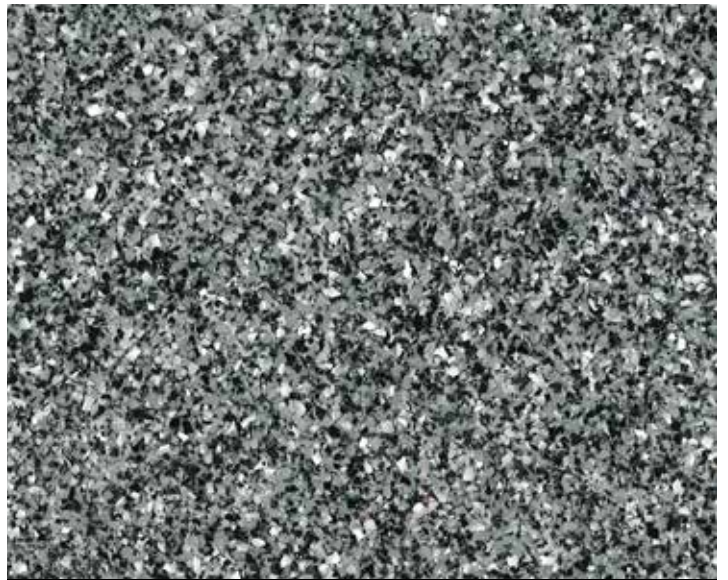


NEOGARD[®]
NEOCRETE SL FLAKES
FLOORING

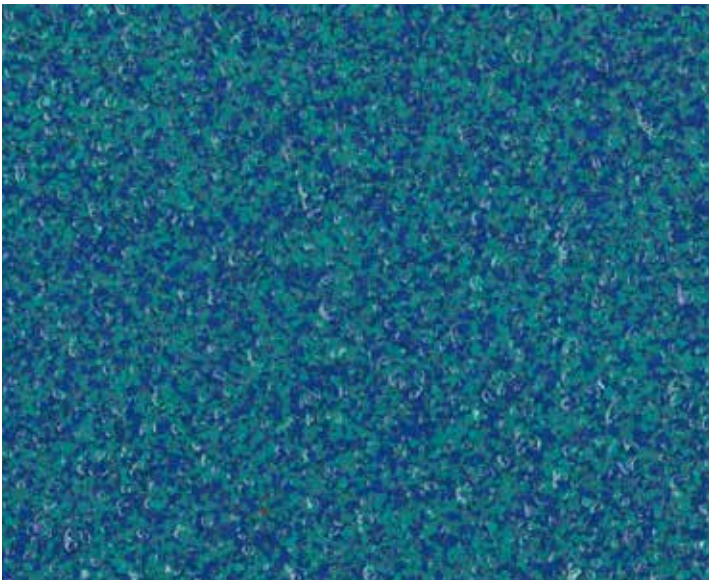




Neocrete SL Flake 3001



Neocrete SL Flake 3002



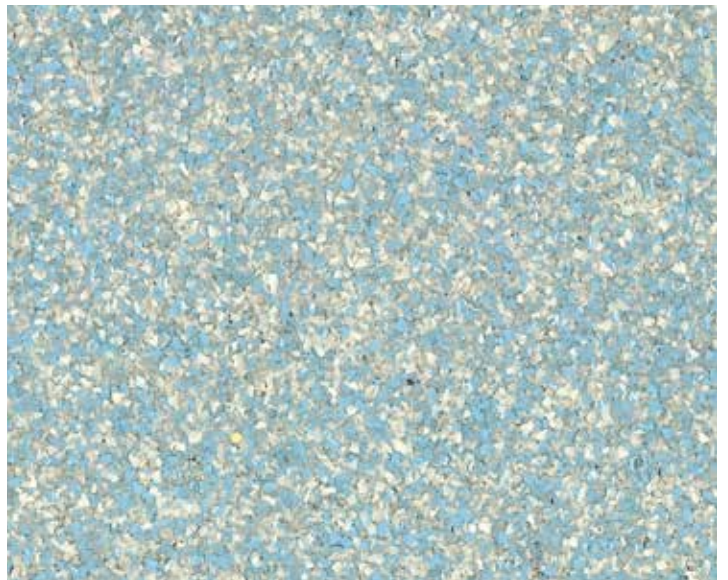
Neocrete SL Flake 3003



Neocrete SL Flake 3004



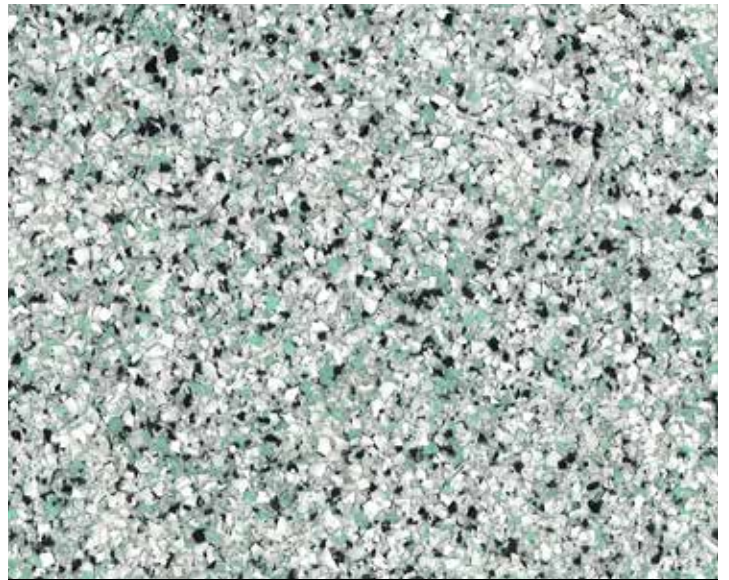
Neocrete SL Flake 3005



Neocrete SL Flake 3006



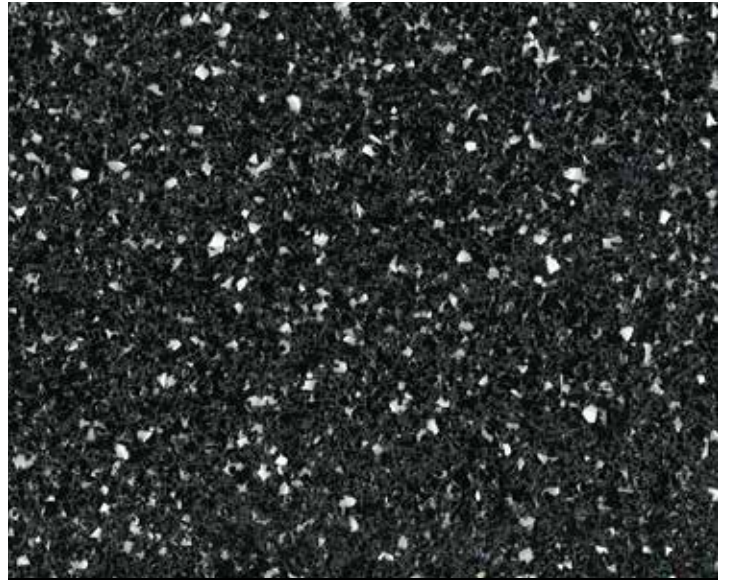
Neocrete SL Flake 3007



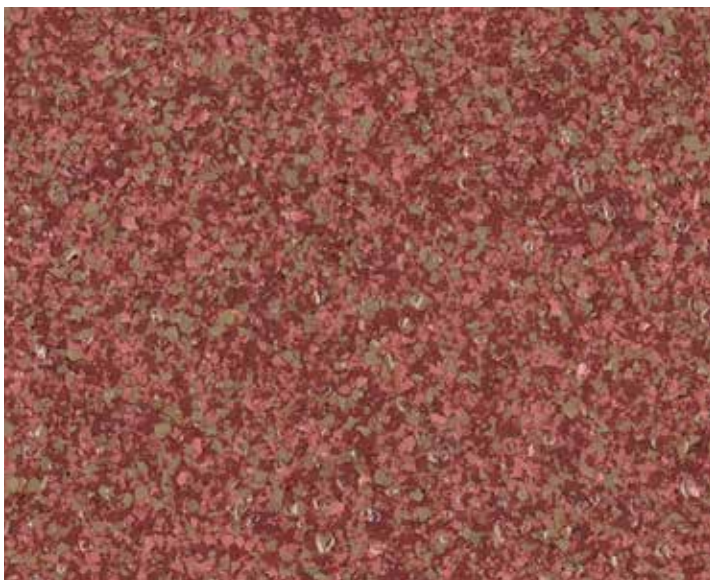
Neocrete SL Flake 3008



Neocrete SL Flake 3009



Neocrete SL Flake 3010



Neocrete SL Flake 3011



Neocrete SL Flake 3012

Heavy Duty Polyurethane Mortar Systems

Uses:

- Mostly All projects with limited application time
- Laboratories
- Lobbies
- Shower Areas
- Groceries / Deli Areas
- Vestibules / Entry Areas
- Pharmaceutical Plants
- Animal Research Centers
- Food and Beverage Plants
- You Name it!

CURED RESIN PERFORMANCE

PHYSICAL PROPERTIES	TEST METHOD	RESULTS
Compressive Strength	ASTM C579	7,700 psi
Tensile Strength	ASTM C307	712 psi
Flexural Strength	ASTM C580	2,200 psi
Modulus of Elasticity	ASTM C580	446,7000 psi
Shore D Hardness	ASTM D2240	84
Adhesion	ASTM D4541	400 psi
Water Resistance	ASTM C413	0.42%
Resistance Fungal Growth	ASTM G21	No Support of Growth
Flammability	ASTM D635	Pass
Volume Solids	ASTM D5201	99.93%
Flash Point	ASTM D3278	None
VOC (mixed)	ASTM D5201	8.4 g/L
Usable Pot Life @70°F		15 minutes
Application Temperature Range		34oF to 90oF
Temperature Range		-120oF to 210oF

DEFINITION	
NEOCRETE SL QUARTZ	NEOCRETE SL FLAKES
Decorative/Functional Fast Setting, water dispersed, heavy duty, SELF LEVEL	
Grade, U.S.D.A. acceptable, and Hybrid Cementitious Polyurethane Mortar	
Flooring System designed to be installed and perform under adverse substrate and operation conditions such chemical exposure and thermal shock	
SELF LEVEL GRADE & COLORED QUARTZ	SELF LEVEL GRADE & COLORED MICRO-FLAKES
FEATURES	
NEOCRETE SL QUARTZ	NEOCRETE SL FLAKES
Beauty meets the Beast; Interior and exterior use	
Right Balance between slip resistance and clean ability	
Meets EPA National requirements for VOC	
Extended working time and still fast cure	
High Solids, Low Odor, Aliphatic, Chemical Resistant Urethane Top Coat	
Does Not Promote bacterial growth	
Great flow and workability	
Colored Quartz	Colored Micro-Flakes
BENEFITS	
NEOCRETE SL QUARTZ	NEOCRETE SL FLAKES
Reduces the shut downs on operating facilities during system installation	
Sustainable; Ease Maintenance fully compatible with it self	
Excellent performance at high operation temperature variations	
Excellent Chemical Resistance	
One Day, Three Steps Flooring System	One Day, Three Steps Flooring System

Neocrete SL Quartz & Flake Chemical Resistant Partial List

Acetic Acid 10%	0
Blood	0
Calcium Chloride	0
Diesel Fuel 220°F	0
Hydrochloric Acid 15%	0-1
Isopropyl Alcohol	0
Jet Fuel	0
Ketchup	0
Lactic Acid 20%	0-1
Sodium Hydroxide 50%	1
Solvent 100	0-1
Sulfuric Acid 50%	1
Motor Oil	0
Skydrol	0
Tall Oil Fatty acid	1
Urine	0-1

Ratings are based over 7 days spot test
 0 = No Effect, 1 = Stain/Dulls,
 2 = Blisters, 3 = Lifts Film

NEOGARD®
**NEOCRETE
 SL FLAKES**
 FLOORING



NBRO_FLR_CCFLAKE090913
 PRINTED IN U.S.A.

The information, data and suggestions contained herein are believed to be reliable, based upon our knowledge and experience; however, it is expressly declared that Seller does not guarantee the result to be obtained in Buyer's process. SELLER HEREBY EXPRESSLY DISCLAIMS ANY IMPLIED WARRANTY OF MERCHANTABILITY FOR FITNESS FOR A PARTICULAR PURPOSE AND/OR ANY OTHER WARRANTY, EXPRESS OR IMPLIED as to any and all products and/or suggestions described herein, whether such products are used alone or in combination with other materials. Buyer must make its own determination of the suitability of any product for its use, and the completeness of any information contained herein. Nothing contained herein shall be construed to constitute inducement or recommendation to practice any invention covered by any patent without authority from the owner of the patent. Applicator is an independent contractor of, and should under no circumstances be viewed as an employee or agent of, the NEOGARD® Division of JONES-BLAIR®. NEOCRETESLSIGS.indd